



**VIKING**  
**PPE**

## MEASUREMENT FORM

### Measurement Form (please use capital letters)

Style no.	Date:	<b>A: Total height</b> Measured without shoes.	cm
Name:		<b>B: Chest</b> Measured with the arms relaxed at sides.	cm
Address:		<b>C: Waist</b> Measured at natural waist line at belly button.	cm
		<b>D: Hip</b> Measured at the widest point of the hips.	cm
		<b>E: Length of inseam at leg</b> Measured from the crotch to the floor, with feet slightly apart and without shoes.	cm
		<b>F: Calf</b> Measured around the widest point at the calf.	cm
		<b>G: Neck</b> Measured around the neck at the Adam's apple.	cm
		<b>H: Shoulder</b> Measured around the widest point of the shoulders.	cm
		<b>I: Length of arm</b> Measured from base of neck to just below wrist bone. Arm must be hanging relaxed at the side.	cm
		<b>J: Wrist</b> Measured around the wrist at the wrist joint.	cm
		<b>K: Weight</b> Weighed wearing normal underwear and WITHOUT shoes.	kg
		<b>L: Shoes/boots</b> Shoe and boot size	
	Comments, logo etc:		
Estimated size (construction department):			

The above measurements are used to determine the size of your standard suit. In case of these measurements not fitting a standard size, a special suit will be manufactured at an additional cost. All measurements must be made with the clothes on that you would normally wear underneath your suit.



**VIKING**  
**PPE**

MEASUREMENT FORM



### **B. Chest**

Measured with the arms relaxed at sides.



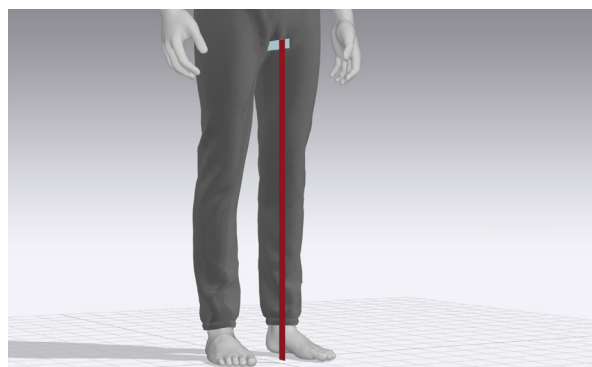
### **C. Waist**

Measured at natural waist line at belly button.



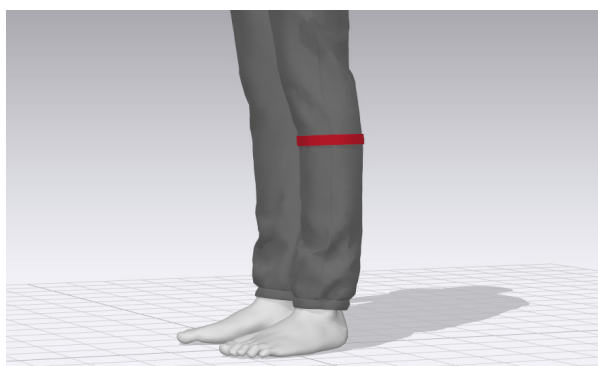
### **D. Hip**

Measured at the widest point of the hips.



### **E. Length of inseam at leg**

Measured from the crotch to the floor, with feet slightly apart and without shoes.



### **F. Calf**

Measured around the widest point at the calf.



### **G. Neck**

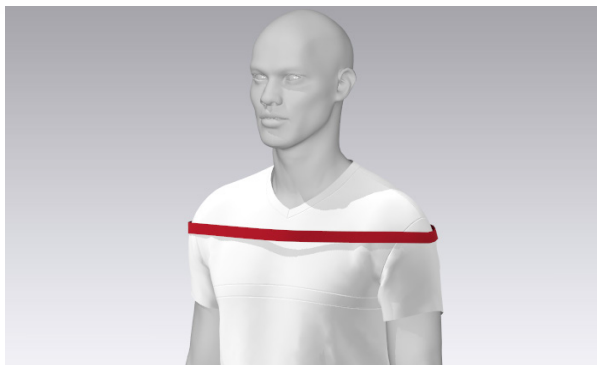
Measured around the neck at the Adam's apple.

\*All measurements should be in cm.



**VIKING**  
**PPE**

MEASUREMENT FORM



### **H. Shoulder**

Measured around the widest point of shoulders.



### **I. Length of arm**

Measured from base of neck to just below wrist bone. Arm must be hanging relaxed at the side.



### **J. Wrist**

Measured around the wrist at the wrist joint.

\*All measurements should be in cm.

FOR FURTHER INFORMATION  
[WWW.VIKING-LIFE.COM](http://WWW.VIKING-LIFE.COM)

**VIKING LIFE-SAVING EQUIPMENT**  
Protecting people and business