



[Request More Details NOW](#)



**Time:** November, 2020

**Location:** Wansan Islands Sea, South China Sea

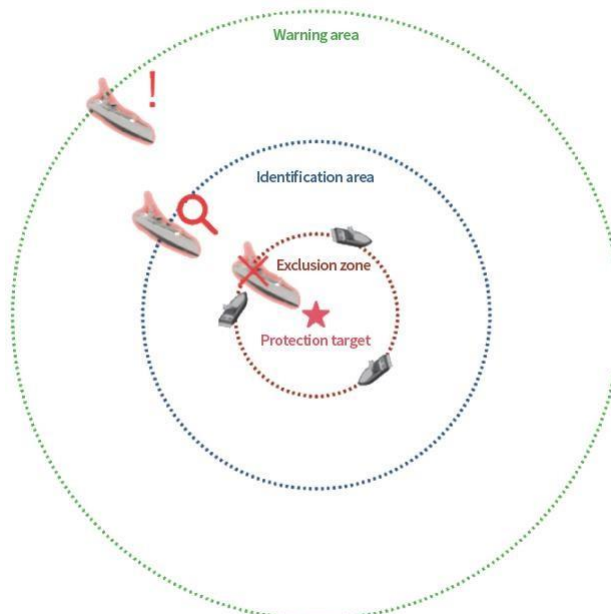
**Background:**

It is a basic, routine and repetitive military task to carry out uninterrupted surveillance, tracking and collecting evidence or driving away sensitive targets. Patrol carried out by soldiers not only occupy a large number of personnel, but also easily affected by sea conditions, weather, time period and personnel mental state. With the outstanding advantages of full time operation, long endurance, strong concealment, low cost, and fast response, OceanAlpha's USVs are widely used in the fields of patrol, reconnaissance, tracking, surveillance and law enforcement.

In November 2020, OceanAlpha participated in an escort exercise for an important target to test the integrated capability of the L30 USV. The exercise systematically tested the following capabilities of L30: the precision of autonomous cruise, the ability of tracking and monitoring surface moving targets, the ability of situation construction, and the ability of high-speed turning and maneuvering. The excellent exercise results demonstrated the comprehensive capability of the L30 USV.

## 01 Program overview:

The target to be protected is set up in the mission planning interface, and the scope of warning area, identification area and deinal area is delimited around the target. The L30 will detect and scan targets entering the warning area, identify and collect evidence of suspicious targets entering the identification area, and warn, intercept and block illegal targets entering the deinal area.



The usv escort scheme is shown as follows

## 02 Main functions:

To meet the requirements of reconnaissance patrol tasks, this drill adopts L30, a medium reconnaissance patrol USV, to test and verify the following capabilities:

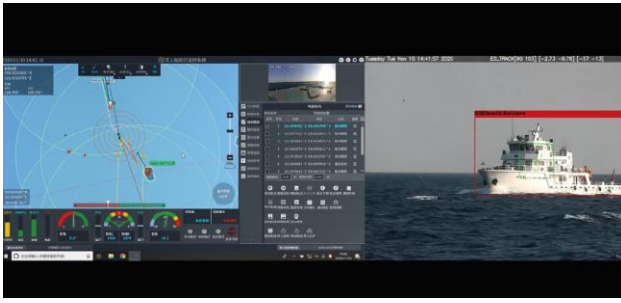


### 1. Autonomous cruise and inspection capability

The USV can be coordinated by a single boat or multiple boats, can be controlled remotely or autonomous sailing, and can carry out uninterrupted cruise patrol missions according to preset routes. During cruise, the USV detects, locks, and tracks targets using electro-optical devices, and provides high-precision track tracking capabilities.

### 2. Reconnaissance and forensics capability

Using radar and electro-optical equipment, the USV can automatically detect targets entering the warning area, lock them with one button, and continuously track them for automatic real-time forensics.



### 3. Warn and drive away the invading target

It can turn on the alarm light and the loudspeaker to warn the invasion target, and turn on the strong light and strong sound equipment for blocking.



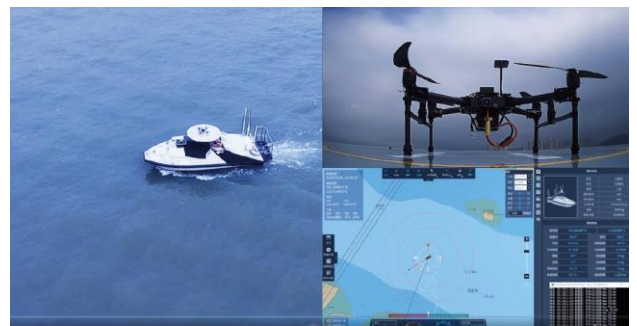
### 4. Autonomously track and intercept targets

Once a suspect target is detected, the USV can locate and continuously track it, and intercept it with multiple boats cooperation.



### 5. Night surveillance

Equipped with sensing equipment such as navigation radar and AIS, the USV can navigate safely at night. The USV can monitor the water surface in real time and carry out covert reconnaissance duty at night through the infrared night vision function to discover and identify suspicious targets.



### 6. Multi-domain collaboration

Cross-domain collaboration between UAVs and USVs enables greater target detection and situational awareness.

## 03 Summary:

In this comprehensive exercise, L30 has achieved excellent results. The test results show that L30 has the ability to replace manned craft in carrying out reconnaissance, patrol, warning, tracking, surveillance, forensics and other combat support tasks.

